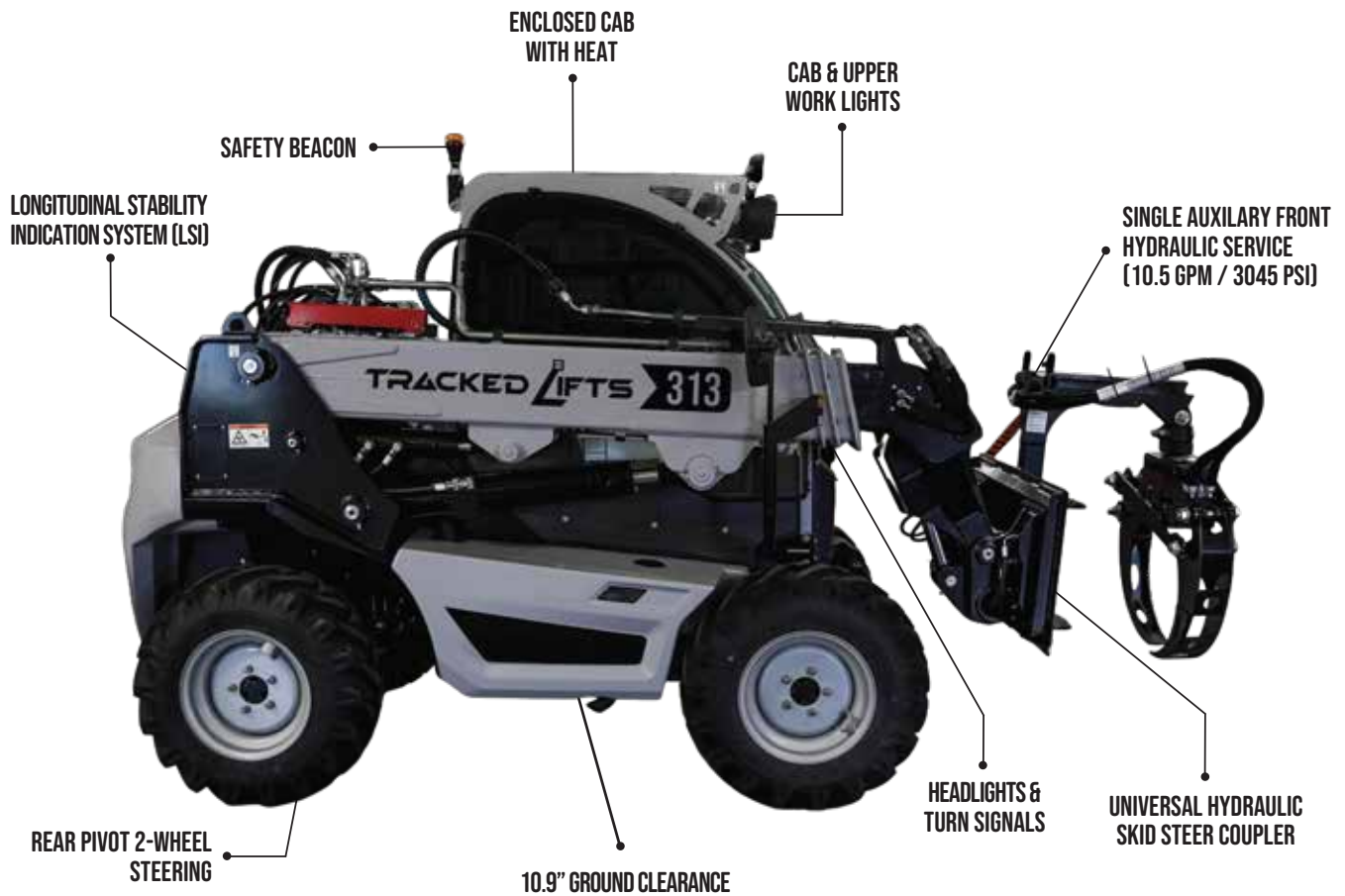


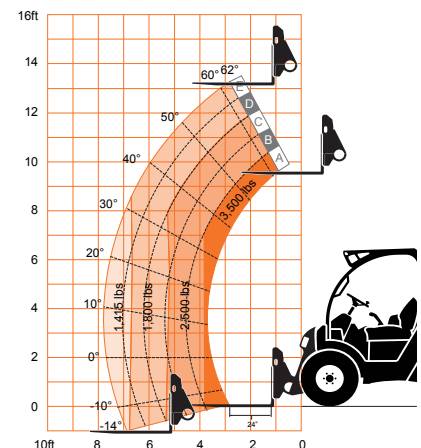
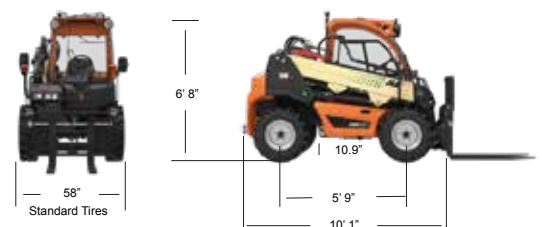
Z 313

13ft Lifting Height



SPECIFICATIONS

Max. lifting height	13'1"
Rated load capacity	3,500 lbs
Max. forward reach	7'7"
Load at max. height	1,800 lbs
Load at max. reach	1,415 lbs
Top travel speed	12.4 mph
Turning radius over tires	134"
Operating weight	7,910 lbs
Overall height	6'8"
Overall width	58"
Ground clearance	10.9"
Engine	Kubota Diesel, 24.8 HP
Transmission	Hydrostatic 2-Speed 4WD
Single joystick proportional controls	
Seatbelt engagement & operator presence	



The TL 313 lifts up to 3,530 lbs and reaches a maximum height of 13 ft 1 in, giving crews the strength and reach needed to handle real jobsite demands. Its compact footprint and rear-wheel steering deliver tight maneuverability, making it easy to navigate backyards, narrow access points, and congested work areas. Whether you're moving logs, loading brush, handling materials, or clearing snow, the TL 313 is built to perform in tight spaces—giving your crew an extra set of hands when it matters most.

ATTACHMENTS

- + Material Bucket
- + Forks
- + Rock Grapple
- + Log Grapple
- + Tree Boom

Universal skid steer attachment. Please note- there is no electrical connections at the boom.

STANDARD SPECS

Engine

Make and Model	Kubota V1505-E4B
No. of Cylinders	4
Displacement	91.4 cu in / 1.5 L
Gross Power (Basic)	24.8 HP / 18.5 kW
Max. Torque	68-lb-ft / 92.6 Nm
HP @ RPM	24.8 HP / 2,300 RPM
Fuel Tank Capacity	14.5 gal / 33 L

Hydraulic System-Implement

Capacity	8.72 gal / 33L
Max. Auxillary Flow to Boom Head	10.5 gpm / 2,610 psi

Auxillary hydraulics used for all attachments equipped with cylinders or other hydraulic components

Axles

Planetary on front and rear axles
2-wheel and 4-wheel drive

Brakes

Service Brakes	Inboard wet disc brake on front axle
Parking Brakes	Wet disc spring-applied hydraulic release

Steering 2-Wheel

Rear Pivot Power Steering

STANDARD FEATURES

Cab

- + Enclosed Cab (Certified ROPS/FOPS Structure) with Heat
- + Single Joystick Proportional Controls (Framer/-Loader) with integrated Fwd. & Rev Switch and Speed Selection
- + Adjustable Suspension Seat with 3" Seat Belt
- + Integrated Arm Rest
- + Seatbelt Engagement & Operator Presence
- + Rear/Roof Wiper
- + Rear View Mirrors

Driveline

- + Kubota V1505-E4B 24.8hp Diesel Engine
- + Hydrostatic 2-Speed Transmission 2WD / 4WD
- + 10.0/75-15.3 Pneumatic Ag Tread Tires
- + Rear Pivot 2-Wheel Steering
- + Engine Block Heater

Hydraulics

- + Universal Skid Steer Coupler (Hydraulic)
- + Single Auxiliary Front Hydraulic Service (10.5 gpm / 3045 psi)
- + Longitudinal Stability Indication System (LSI)

Structures

- + Tow Hitch
- + 41-in Carriage with Bolt-On Backrest
- + 48in Pallet Forks
- + Boom Prop

Electrical

- + Battery Disconnect
- + Work Lights
- + Road Lights
- + LED Motion / Amber Beacon
- + Back Up Alarm

TIRE OPTIONS

Standard

- + 10.0/75-15.3 Pneumatic Ag Tread

Optional

- + 10.0/75-15.3 Foam-Filled Ag Tread
- + 10-16.5 Turf