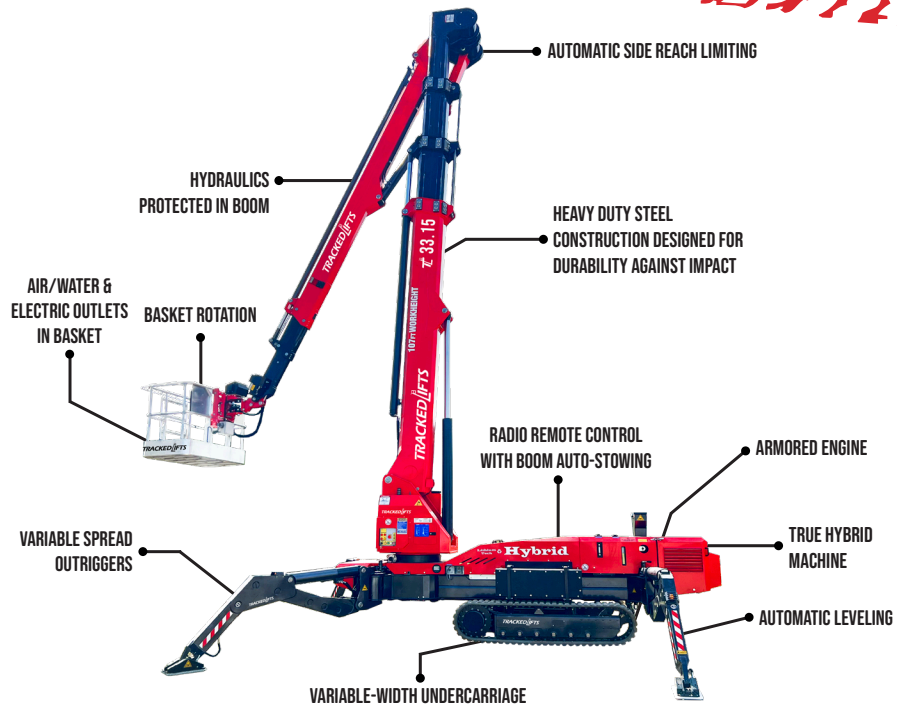


33.15

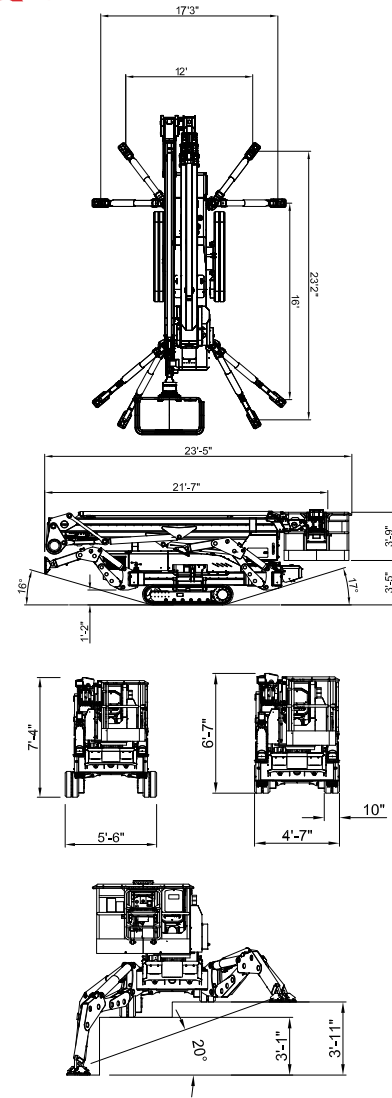
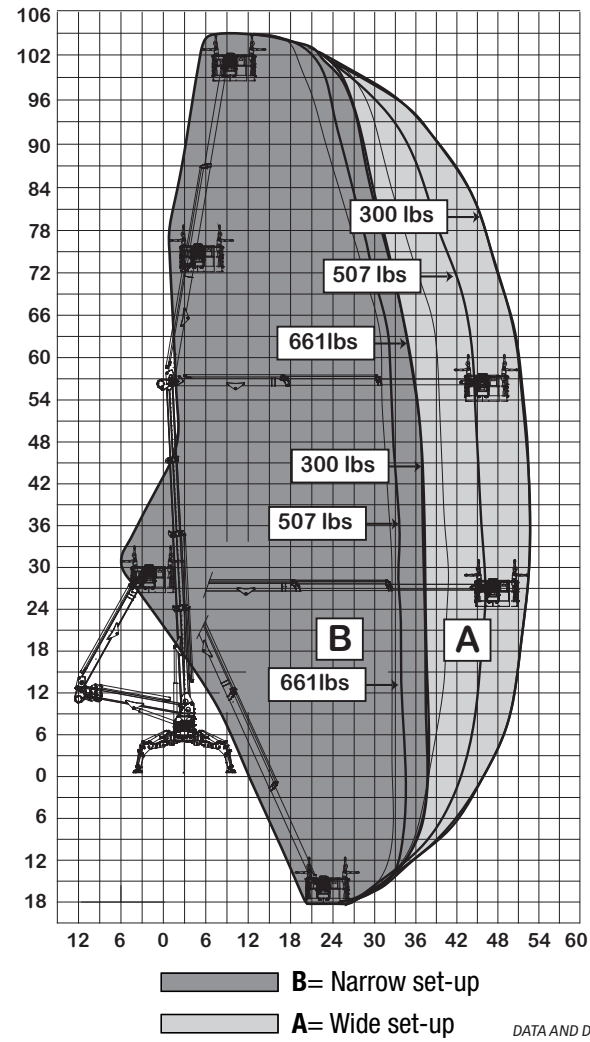
107' WORKING HEIGHT



SPECIFICATIONS

Max. working height	107'
Max. outreach	50'
Max. basket load	661 lbs
Basket size	5'5" x 2'11" (2-man basket)
Basket rotation	± 90°
Turret rotation	360° non-continuous
Traveling length	21'7" (23'5" with basket)
Traveling height	6'7" narrow mode / 7'4" wide mode
Traveling width	4'7" narrow mode / 5'6" wide mode
Outrigger Spread	16' x 17'3" wide position / 12' x 23'2" narrow position
Battery	24V Lithium Ion Hybrid Power
Diesel Engine	Kubota Diesel, 22 HP
Total weight	15,334 lbs
Gradability, max. across slope	31% (17°)
Gradability, max. up and down slope	31% (17°)
Deployment ability on slopes up to	31% (17°)

DIAGRAMS



DATA AND DIMENSIONS ARE INDICATIVE AND NOT BINDING

ADD-ON OPTIONS:

- White Rubber Non-Marking Tracks
- Custom Colors
- Emergency 12V Hydraulic System
- 110V Hydraulic System