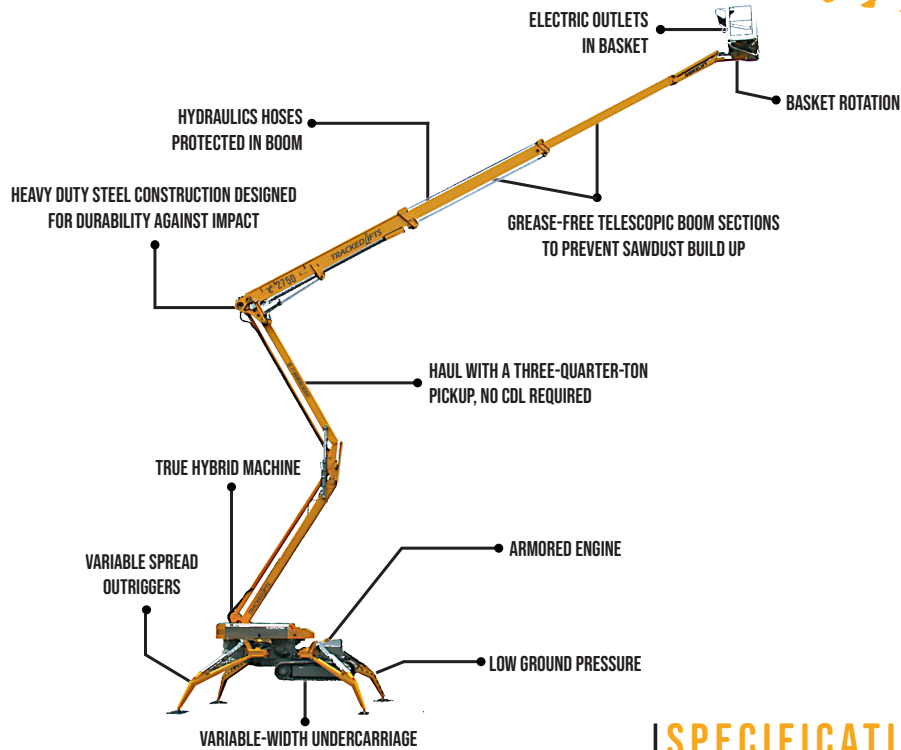


TC 2750

90' WORKING HEIGHT

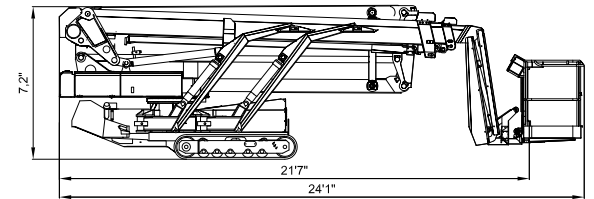
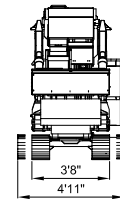
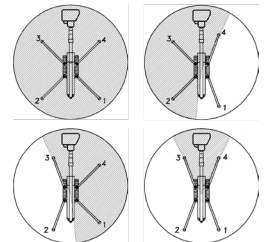
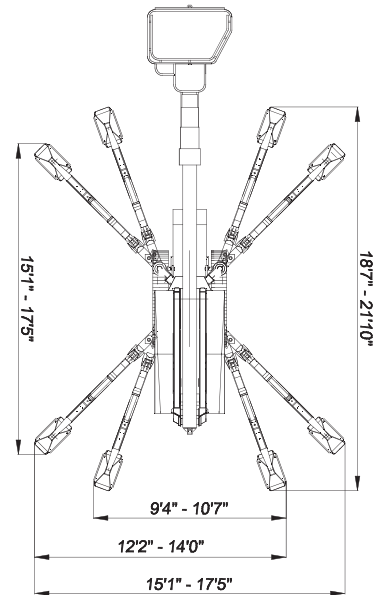
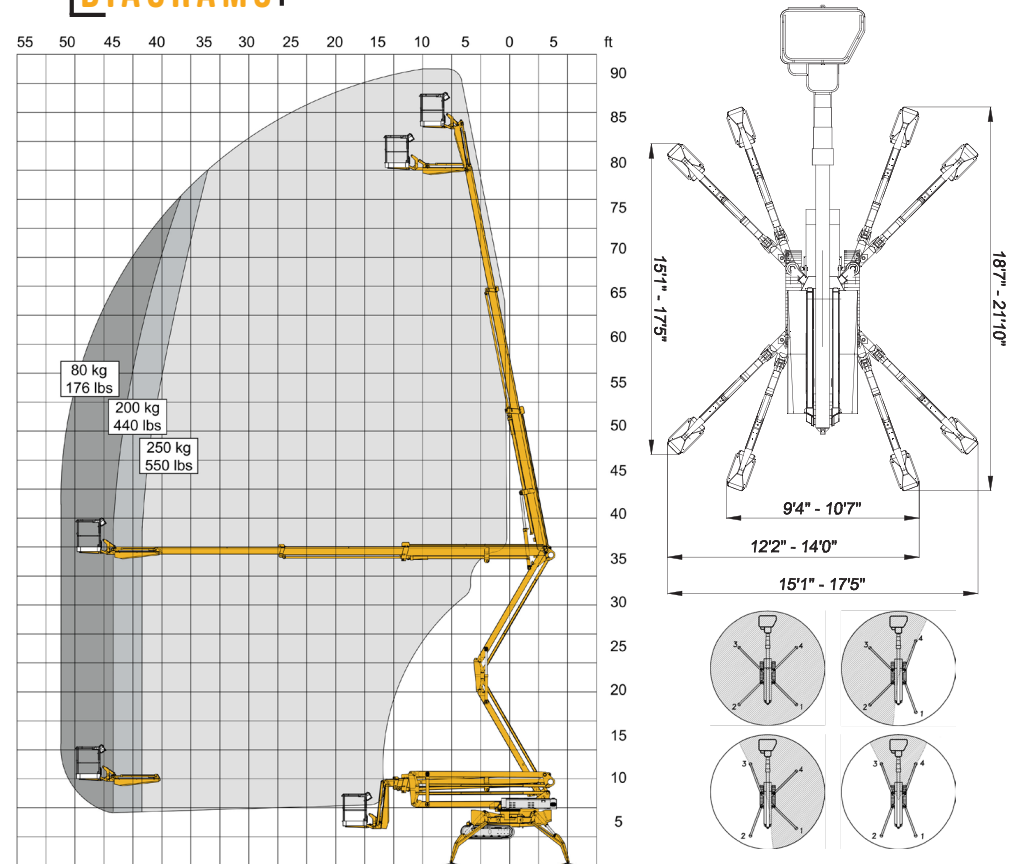


SPECIFICATIONS

Max. working height	90'2"
Max. outreach	49'
Max. basket load	550 lbs
Basket size	3'2" x 2'10" (1-man basket)
Basket rotation	± 41°
Turret rotation	355° non-continuous
Traveling length	21'7" (24'1" with basket)
Traveling height	7'2"
Traveling width	3'8" narrow mode / 4'11" wide mode
Outrigger Spread	17'5" x 17'5" wide position / 10'7" x 21'10" narrow position
Battery	24V / 200Ah / 5h
Charger	24V / 25A
Diesel Engine	Kubota Diesel, 18.8 HP
Total weight	11,420 lbs
Gradability, max. across slope	25% (14°)
Gradability, max. up and down slope	35% (19.3°)
Deployment ability on slopes up to	40% (21.8°)

DIAGRAMS

DATA AND DIMENSIONS ARE INDICATIVE AND NOT BINDING



ADD-ON OPTIONS:

- White Rubber Non-Marking Tracks
- Custom Colors
- Spotlight in Basket
- Flashing Beacon Lights on Boom Stabilizers (5)
- Radio Remote Control Drive
- Auto Leveling
- Intercom
- 2nd Electric Drive Motor