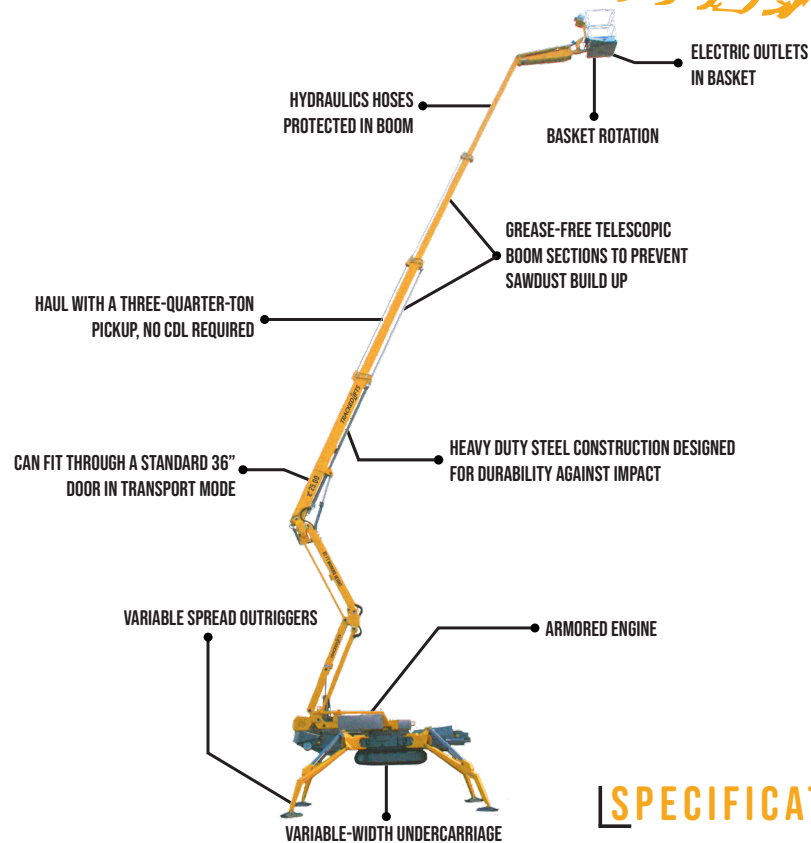


π 25.00

82' WORKING HEIGHT

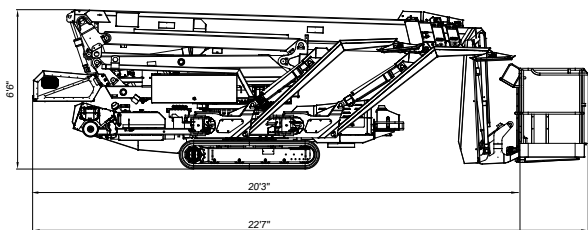
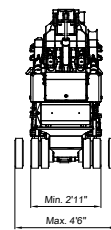
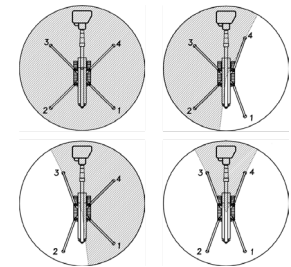
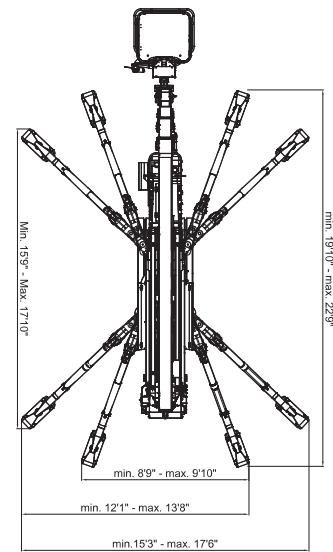
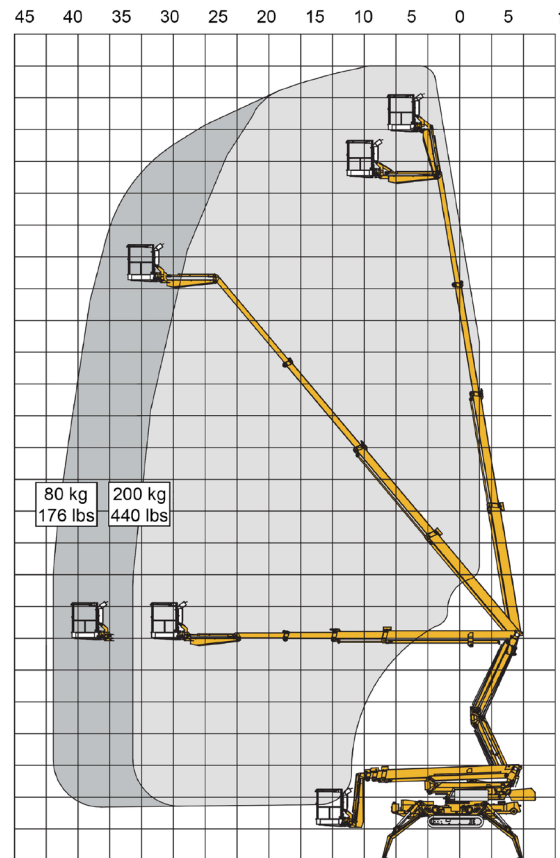


SPECIFICATIONS

Max. working height	82'
Max. outreach	42'
Max. basket load	440 lbs
Basket size	3'2" x 2'10" (1-man basket)
Basket rotation	± 41°
Turret rotation	355° non-continuous
Traveling length	20'3" (22'7" with basket)
Traveling height	6'6"
Traveling width	2'11" narrow mode / 4'6" wide mode
Outrigger Spread	17'6" x 17'10" wide position / 9'10" x 22'9" narrow position
Battery	24V Emergency Descent System
Diesel Engine	Kubota Diesel, 18.8 HP
Total weight	8,962 lbs
Gradability, max. across slope	30% (16.7°)
Gradability, max. up and down slope	30% (16.7°)
Deployment ability on slopes up to	40% (21.8°)

DIAGRAMS

DATA AND DIMENSIONS ARE INDICATIVE AND NOT BINDING



ADD-ON OPTIONS:

- White Rubber Non-Marking Tracks
- Custom Colors
- Spotlight in Basket
- Flashing Beacon Lights on Boom Stabilizers (5)
- Radio Remote Control Drive
- Auto Leveling
- Intercom
- Increased Battery Capacity, 400Ah
- 24V Hybrid