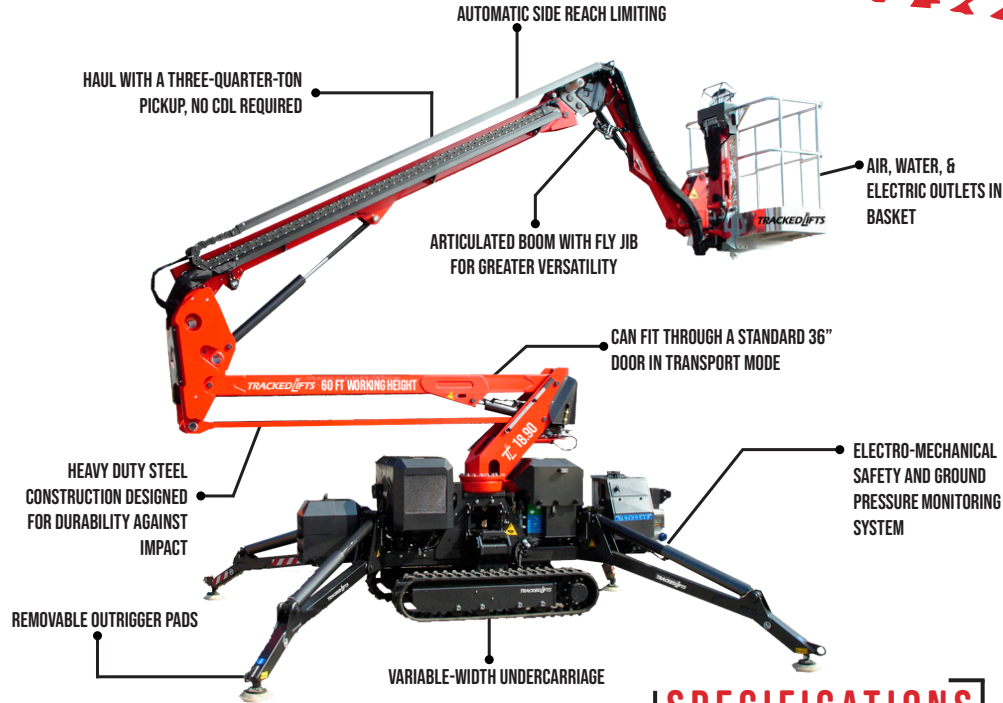


**18.90**  
60' WORKING HEIGHT

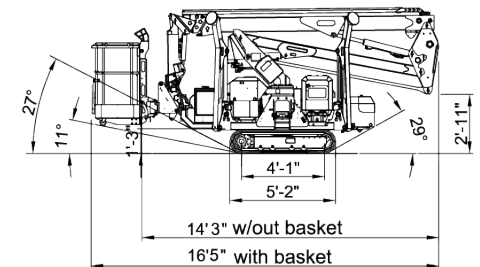
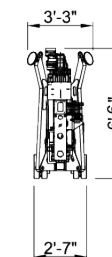
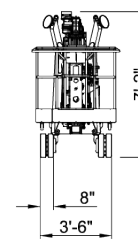
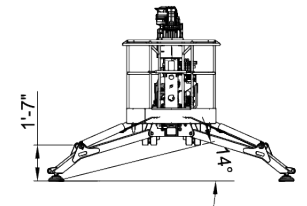
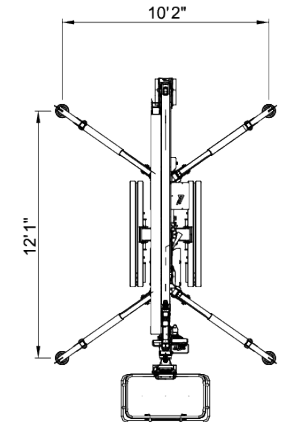
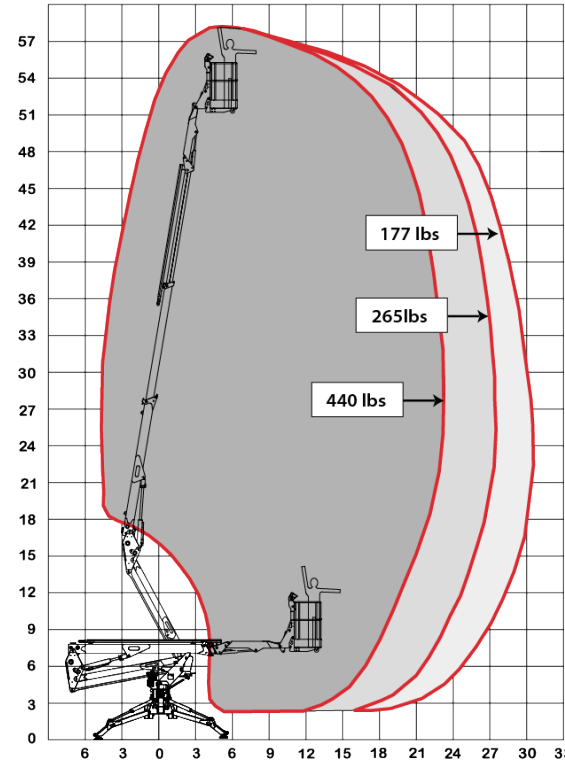


## SPECIFICATIONS

	GASOLINE	DIESEL
Max. working height	60'	
Max. outreach	30'10"	
Max. basket load	440 lbs	
Basket size	2'7" x 2'3" (1-man basket)	4'6" x 2'3" (2-man basket)
Turret rotation	360° non-continuous	
Traveling length	14'3" (16'5" with basket)	
Traveling height	6'6" narrow mode / 7'2" wide mode	
Traveling width	2'7" narrow mode / 3'6" wide mode	
Outrigger Spread	10'2" x 12'1"	
Battery	110V Emergency Descent System	
Diesel Engine	Honda Gasoline, 13HP	Kubota Diesel, 13 HP
Total weight	5,290 lbs	5,577 lbs
Gradability, max. across slope	31% (17°)	
Gradability, max. up and down slope	29% (16°)	
Deployment ability on slopes up to	31% (17°)	

## DIAGRAMS

DATA AND DIMENSIONS ARE INDICATIVE AND NOT BINDING



## ADD-ON OPTIONS:

- White Rubber Non-Marking Tracks
- Custom Colors
- 1-Man or 2-Man Basket
- Honda Gasoline + 24V Battery Hybrid
- Kubota Diesel + 24V Battery Hybrid
- Lithium Ion Battery Power
- Emergency 12V Hydraulic System
- Drive & Stabilization Radio Remote Control
- 2 Speed Drive Motors
- Increased Size of Foot Plates (13.75" Diameter)
- Basket Rotation