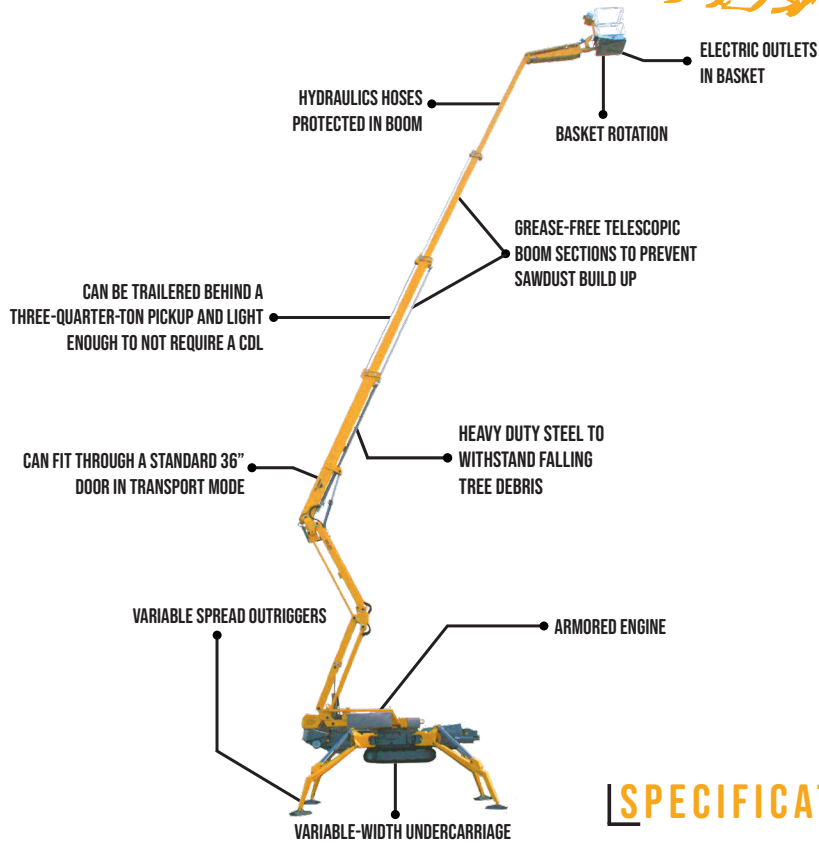


# OMMELIFT 25.00

## 82' WORKING HEIGHT

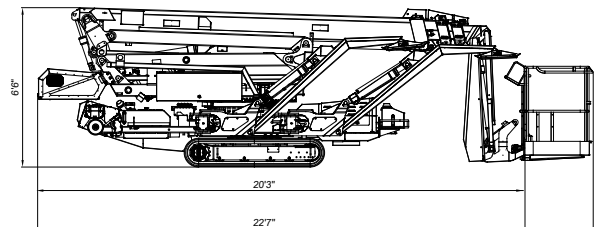
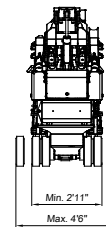
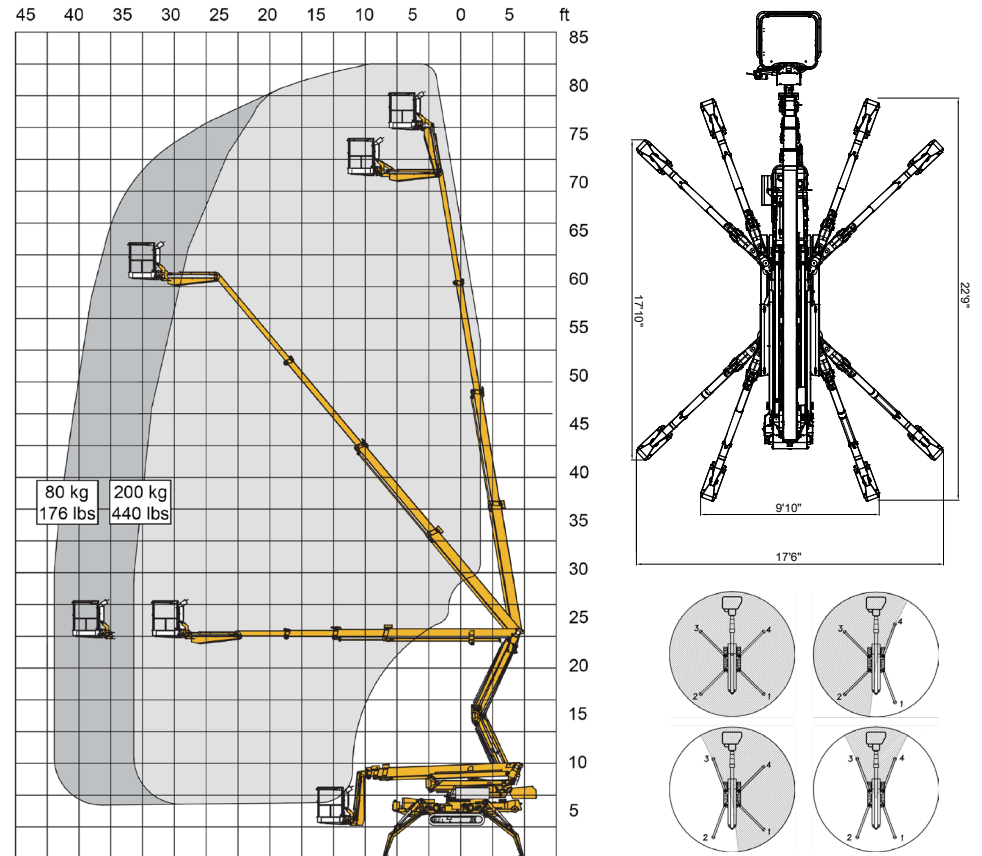


### SPECIFICATIONS

<b>Max. working height</b>	82'
<b>Max. outreach</b>	42' (at 176 lbs)
<b>Max. basket load</b>	440 lbs
<b>Basket size</b>	2'8" x 2'6" x 3'7" (1-man basket interior)
<b>Basket rotation</b>	+ / - 41°
<b>Turret rotation</b>	+ / - 355°
<b>Traveling length</b>	22'7" / (20'3" without basket)
<b>Traveling height</b>	6'6"
<b>Traveling width</b>	2'11" (narrow mode) / 4'6" (wide mode)
<b>Outrigger Spread</b>	17'10" x 17'6" in wide position / 9'10" x 22'9" in narrow position
<b>Battery</b>	24V Emergency Descent System
<b>Diesel engine</b>	14kW / 18.8HP
<b>Total weight</b>	8,962 lbs
<b>Gradability, max. across slope</b>	30% (16.7°)
<b>Gradability, max. up and down slope</b>	30% (16.7°)
<b>Deployment ability on slopes up to</b>	40% (21.8°)

### DIAGRAMS

DATA AND DIMENSIONS ARE INDICATIVE AND NOT BINDING



### ADD-ON OPTIONS:

- White Rubber Non-Marking Tracks
- Custom Colors
- Spotlight in Basket
- Flashing Beacon Lights on Boom Stabilizers (5)
- Radio Remote Control Drive
- Auto Leveling
- Intercom
- Increased Battery Capacity, 400Ah
- 24V Hybrid