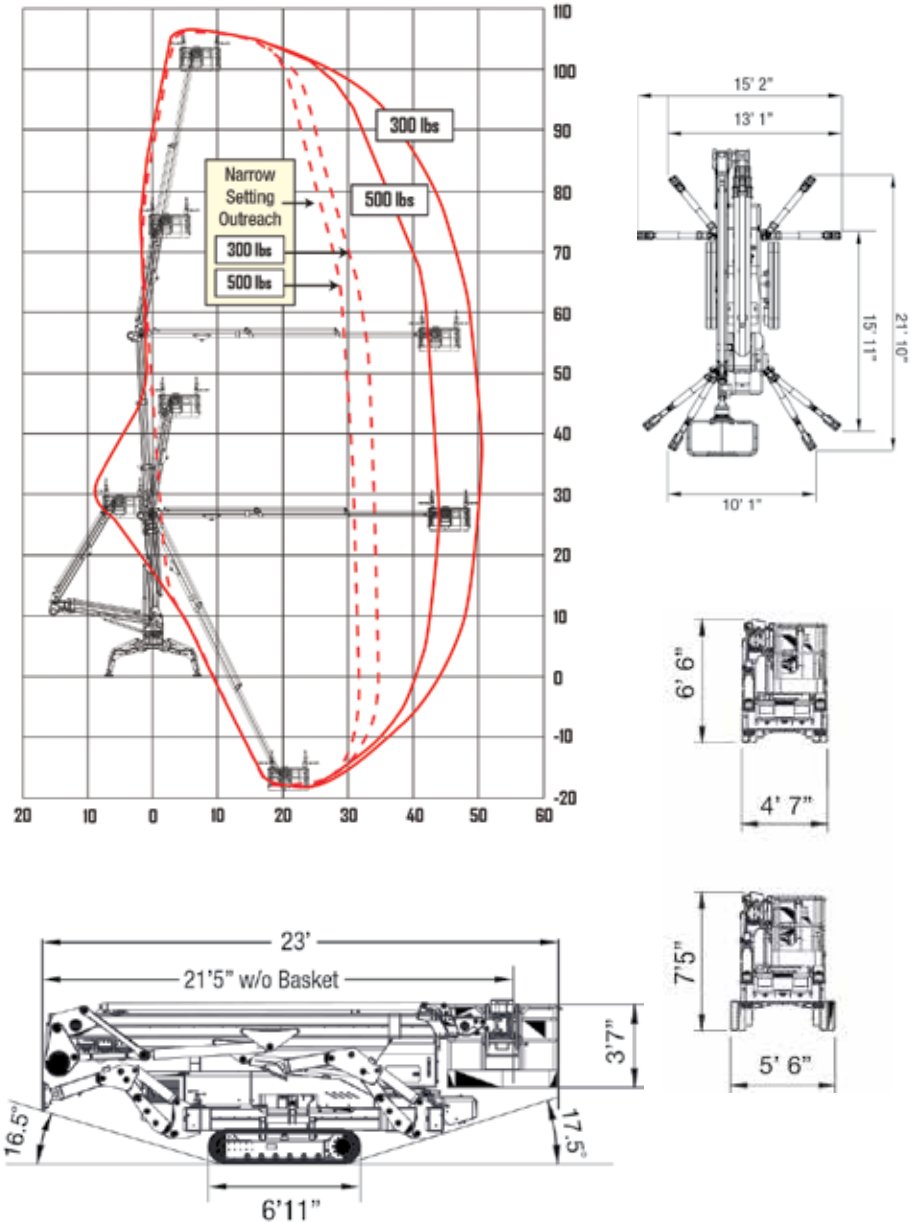


## TRACKED LIFTS 33.15



DATA DIMENSIONS AND FEATURES ARE INDICATIVE AND NOT BINDING.

## TECHNICAL DATA 33.15

Max Working height, ft	<b>107'</b>
Height to Basket Floor	100'
Side Reach at 300lbs	50'
Turret Rotation	± 400°
Basket Rotation	± 90°
Basket Dimensions	4'11" x 2'2" x 3'7"
Length (Transport)	23'
Length (without Basket)	21'5"
Width (Min/Max)	4'7"/5'6"
Height Stowed (Min/Max)	6'6"/7'5"
Outrigger Spread (Min/Max)	10'1"/21'10"
Driving Speed	1.4 MPH
Gradeability (Uphill)	16°
Gradeability (Sideslope)	17°
Deployment Slope	17°
Max Capacity	500 lbs
Diesel Engine (Kubota)	22 HP
Battery Hybrid System	24V
Total Weight of the Machine	15,400 lbs

## STANDARD FEATURES

Kubota Diesel/24V Battery Hybrid Power System

Electro-Mechanical Safety and Ground Pressure Monitoring System

Automatic Sidereach Limiting

Stabilizers/Booms Interblock (Outriggers Disabled once Boom In Operation)

Lock Valves on all the Actuators

Articulated Boom with Fly Jib for Greater Versatility

Basket Rotation ±90°

2-man Basket (Easily Removable)

Variable-Width Undercarriage

Variable Spread Outriggers

Automatic Leveling

Radio Remote Control

Radio Remote Manual Override

On-Board Diagnostics

110V Outlet in the Basket

Emergency Hand Pump

Hour Meter

Heavy Duty Shield Package

Black Rubber Tracks

Air-Water Outlet in the Basket

## OPTIONS

Emergency 12V Hydraulic System

White Rubber Non-Marking Tracks

Custom Colors

110V Hydraulic System