

# 3710 RJ



[www.ommelift.com](http://www.ommelift.com)

## Crawler lift - Telescopic

Dealer:

**TRACKED LIFTS**

**Tracked Lifts LLC**

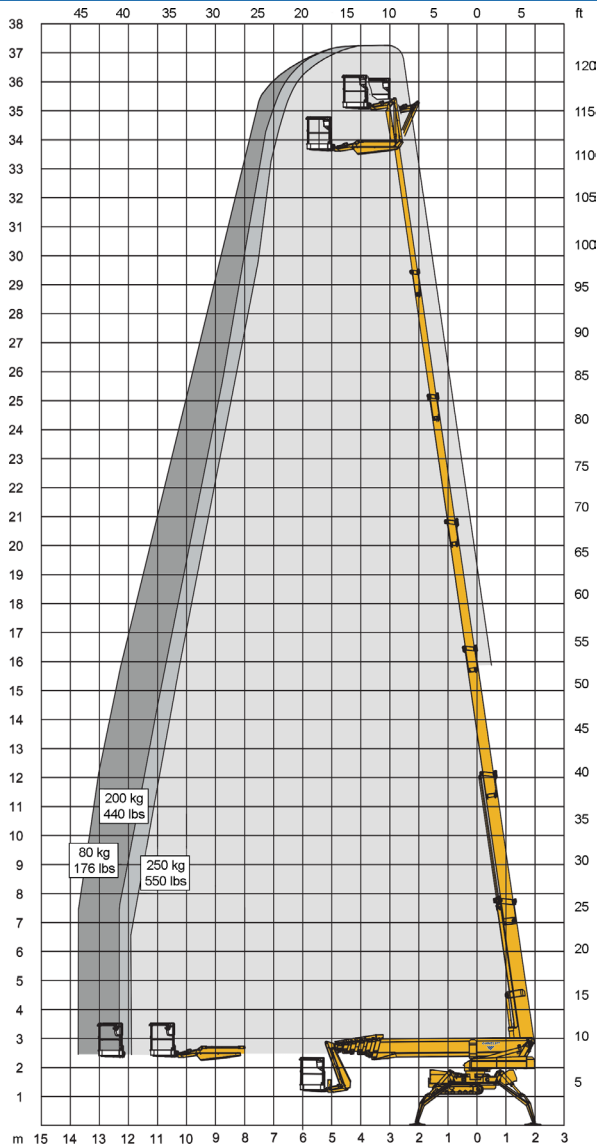
41 Lincoln Street  
New Oxford, PA 17350, USA  
+1 717 688 7192  
[info@trackedlifts.com](mailto:info@trackedlifts.com)  
[www.trackedlifts.com](http://www.trackedlifts.com)

**OMMELIFT**



**Built to last - ask our users!**

# 3710 RJ Crawler lift



Technical Data:	3710 RBJ	3710 RDJ	3710 RBDJ
Max. working height, ft	121'4"		
Max. platform height, ft,	114'8"		
Max. outreach, ft	44'9"		
Up and over clearance, ft	-		
Angle boom length (boom + basket), ft	-		
Jib length (jib + basket), ft	8'9"		
Vertical jib rotation	130°		
Turret rotation	± 355°		
Basket rotation	± 41°		
Max. basket load	550 lbs		
Basket size (detachable), ft	4'1" x 2'6" x 3'8"		
Stabilizer pad size, ft	11" x 17"		
<sup>6</sup> Diesel	BATTERY	DIESEL	<sup>6</sup> HYBRID
Engine		14kW/18.8hp	14kW/18.8hp
Fuel tank capacity		6 gal	6 gal
Generator		24 V / 22 A	24 V / 22 A
Battery pack	24V/400Ah/5h		24V/400Ah/5h
Charger	24 V / 25 A		24 V / 25 A
Double charger system (230V only)	NA		NA
Elec. descent from basket		Optional	
<a href="http://www.ommelift.com">See www.ommelift.com for more features and options</a>			
Gradeability, max. accross slope	<sup>1</sup> Wide 35% (19.3°)		
Gradeability, max. up and down slope	35% (19.3°)		
Set-up ability on uneven ground	30% (16.7°)		
Crawler track length, ft	6'2"		
<sup>1</sup> Undercarriage in Wide <sup>2</sup> Undercarriage in Narrow <sup>3</sup> Wide set-up <sup>4</sup> Wide/Narrow set-up			
Total weight, lbs	12566 lbs	12566 lbs	12566 lbs
<sup>1</sup> Live load in transit position	95.7 psf	95.7 psf	95.7 psf
<sup>2</sup> Live load in transit position	114.8 psf	114.8 psf	114.8 psf
<sup>3</sup> Live load in working position	53.4 psf	53.4 psf	53.4 psf
<sup>4</sup> Live load in working position	66.1 psf	66.1 psf	66.1 psf
Ground pressure, tracks	12.4 psi	12.4 psi	12.4 psi
(Hard surface)	39.1 psi	39.1 psi	39.1 psi
Ground pressure, outrigger pad	39.3 psi	39.3 psi	39.3 psi
Max. force, outrigger	7497 lbf	7497 lbf	7497 lbf

