

# 2750 RXJ



[www.ommelift.com](http://www.ommelift.com)

## Crawler lift - Articulated

Dealer:

**TRACKED LIFTS**

**Tracked Lifts LLC**

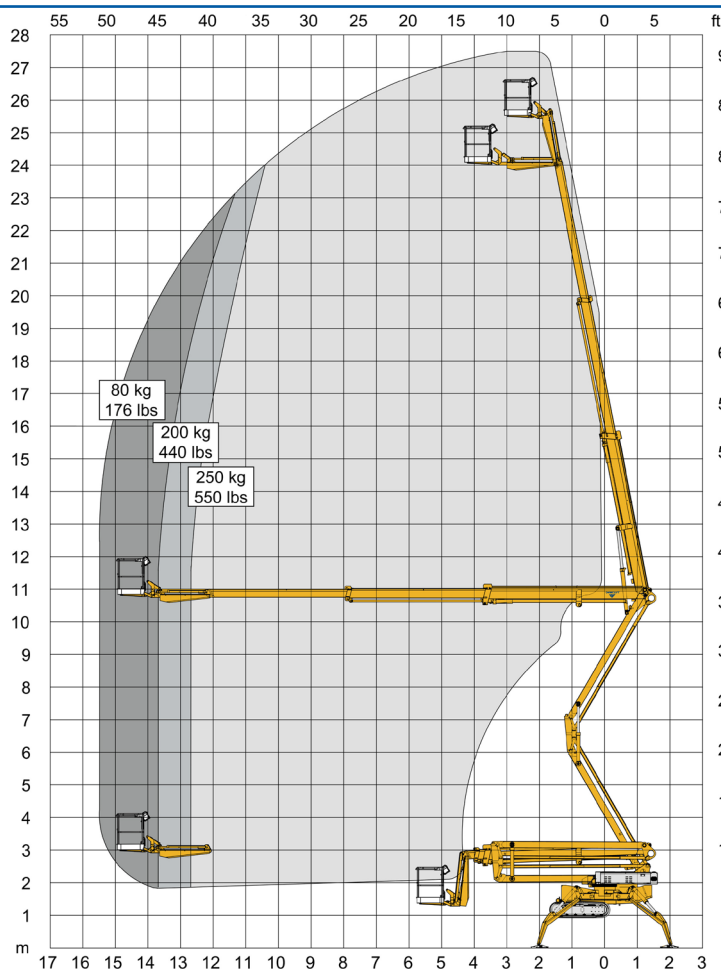
41 Lincoln Street  
New Oxford, PA 17350, USA  
+1 717 688 7192  
[info@trackedlifts.com](mailto:info@trackedlifts.com)  
[www.trackedlifts.com](http://www.trackedlifts.com)

# OMMELIFT



**Built to last - ask our users!**

# 2750 RXJ Crawler lift



Technical Data:		2750 RXBJ	2750 RXDJ	2750 RXBDJ
Max. working height, ft		90'2"		
Max. platform height, ft		83'6"		
Max. outreach, ft		49'0"		
Up and over clearance, ft		35'0"		
Angle boom length (boom + basket), ft		-		
Jib length (jib + basket), ft		8'9"		
Vertical jib rotation		90°		
Turret rotation		± 355°		
Basket rotation		± 41°		
Max. basket load, lbs		550 lbs		
Basket size (detachable), ft		4'1" x 2'6" x 3'8"		
Stabilizer pad size, ft		9" x 17"		
	<sup>6</sup> Diesel	BATTERY	DIESEL	<sup>6</sup> HYBRID
Engine			14kW/18.8hp	14kW/18.8hp
Fuel tank capacity			6 gal.	6 gal.
Generator			24 V / 22 A	24 V / 22 A
Battery pack		24V/400Ah/5h		24V/200Ah/5h
Charger		24 V / 25 A		24 V / 25 A
Double charger system (230V only)		NA		NA
Elec. descent from basket			Optional	
<a href="http://www.ommelift.com">See www.ommelift.com for more features and options</a>				
Gradeability, max. accross slope		<sup>1</sup> Wide 35% (19.3°)		
Gradeability, max. up and down slope		35% (19.3°)		
Set-up ability on uneven ground		40% (21.8°)		
Crawler track length, ft		6'2"		
<sup>1</sup> Undercarriage in Wide <sup>2</sup> Undercarriage in Narrow <sup>3</sup> Wide set-up <sup>4</sup> Wide/Narrow set-up				
Total weight, lbs		11420 lbs	11420 lbs	11420 lbs
<sup>1</sup> Live load in transit position		96.4 psf	96.4 psf	96.4 psf
<sup>2</sup> Live load in transit position		115.7 psf	115.7 psf	115.7 psf
<sup>3</sup> Live load in working position		52.8 psf	52.8 psf	52.8 psf
<sup>4</sup> Live load in working position		65.2 psf	65.2 psf	65.2 psf
Ground pressure, tracks		11.3 psi	11.3 psi	11.3 psi
(Hard surface)		35.6 psi	35.6 psi	35.6 psi
Ground pressure, outrigger pad		43.6 psi	43.6 psi	43.6 psi
Max. force, outrigger		6836 lbf	6836 lbf	6836 lbf

