

# 2300 EX



[www.ommelift.com](http://www.ommelift.com)

## Trailer lift - Articulated

Dealer:

**TRACKED LIFTS**

**Tracked Lifts LLC**

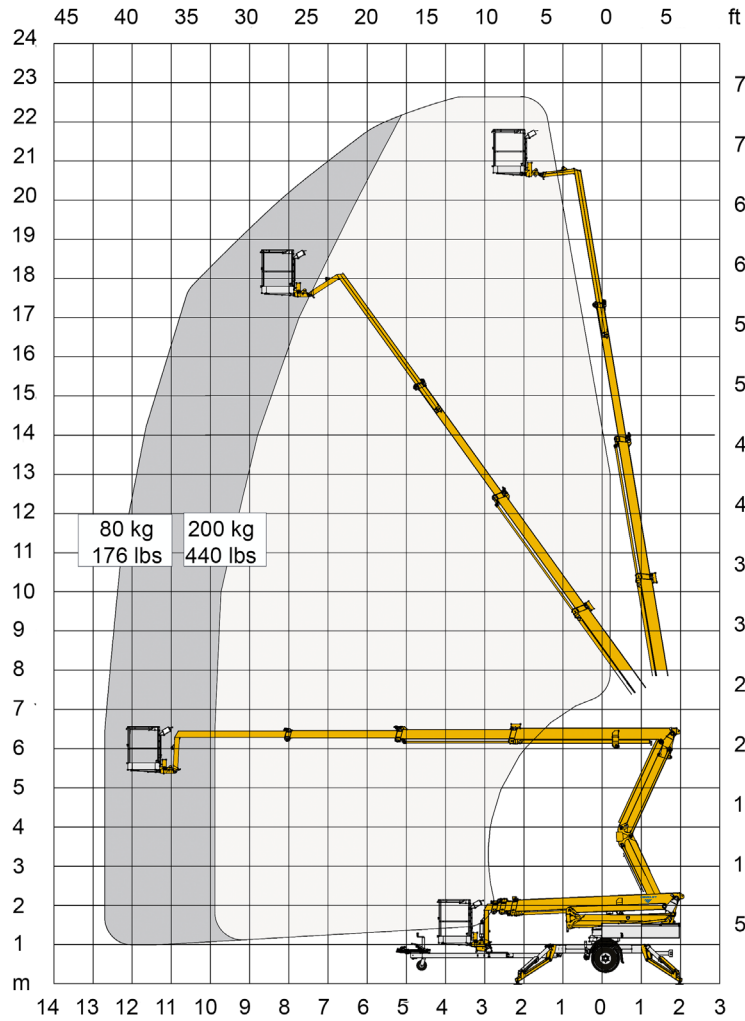
41 Lincoln Street  
New Oxford, PA 17350, USA  
+1 717 688 7192  
[info@trackedlifts.com](mailto:info@trackedlifts.com)  
[www.trackedlifts.com](http://www.trackedlifts.com)

**OMMELIFT**



**Built to last - ask our users!**

# 2300 EX Trailer lift



Technical Data:		2300 EXB
Max. working height, ft		74'1"
Max. platform height, ft		67'5"
Max. outreach, ft		41'7"
Up and over clearance, ft		19'7"
Angle boom length (boom + basket), ft		6'6"
Jib length (jib + basket), ft		-
Vertical jib rotation		-
Turret rotation		± 355°
Basket rotation		± 41°
Max. basket load, lbs		440 lbs
Basket size, ft		4'1" x 2'6" x 3'8"
Stabilizer pad size, ft		ø8"
	<sup>°</sup> Gasoline <sup>°</sup> Diesel	<b>BATTERY</b>
Engine		<sup>°</sup> Optional <sup>°</sup>
Fuel tank capacity		
Generator		
Battery pack		24V/200Ah/5h
Charger		24 V / 25 A
Double charger system (230V only)		NA
Elec. descent		Optional
<a href="http://www.ommelift.com">See www.ommelift.com for more features and options</a>		
Self-propulsion with hydraulic engagement of traction rollers		Standard
Gradeability		14% / 8°
Ground to tire clearance at max. set-up, ft (slope)		Min. 11" (9.4% / 5.4°)
Total weight, lbs		6945 lbs
Ground pressure, outrigger pad		235 psi
Ground pressure with 16" x 16" spreader plate		13 psi
Max. force, outrigger		14.0 kN
Hydraulic stabilizers		Standard
Controls		Proportional
Flush basket mount		Standard
Elec. power outlet in basket		Standard
Tool trays in basket		Standard

