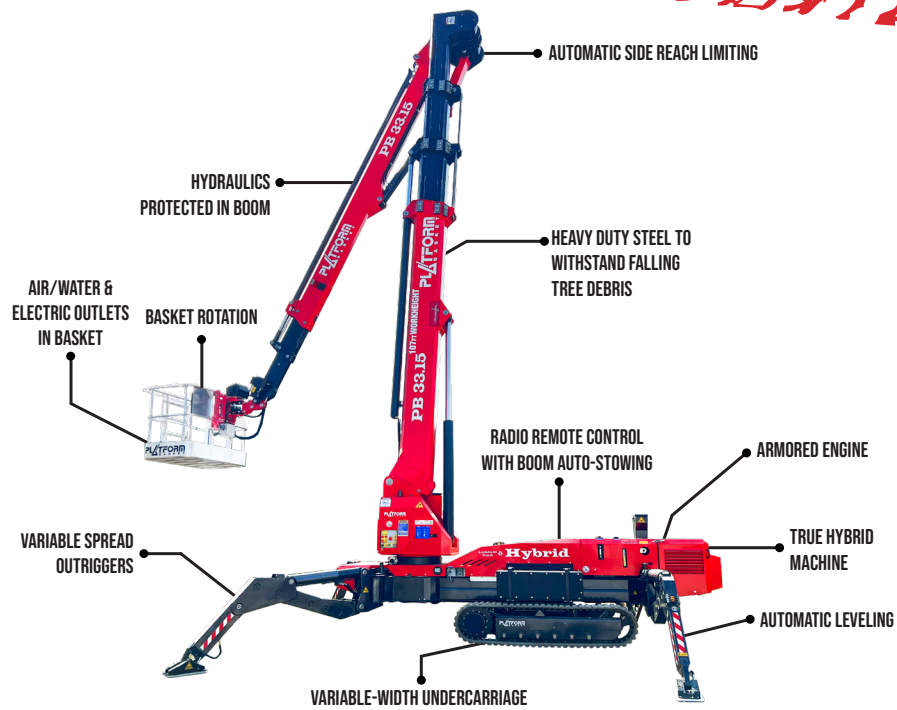


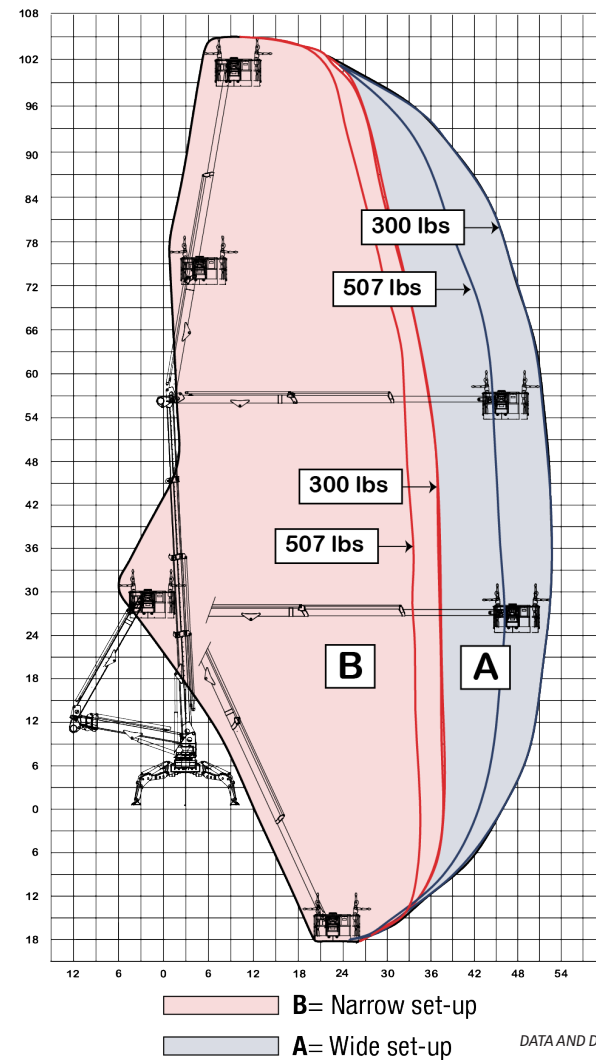
PLATFORM BASKET 33.15



SPECIFICATIONS

Max. working height	107'
Max. outreach	50' (at 300 lbs)
Max. basket load	507 lbs
Basket size	4'8" x 1'11" x 3'7" (2-man basket interior)
Basket rotation	+/- 90°
Turret rotation	+/- 180°
Traveling length	23'5" (21'7" without basket)
Traveling height	6'7" (narrow mode) / 7'4" (wide mode)
Traveling width	4'7" (narrow mode) / 5'6" (wide mode)
Outrigger Spread	16' x 17'3" wide position / 12' x 23'2" narrow position
Battery	24V Lithium Ion Hybrid Power
Diesel Engine	Kubota Diesel, 22 HP
Total weight	15,334 lbs
Gradability, max. across slope	31% (17°)
Gradability, max. up and down slope	31% (17°)
Deployment ability on slopes up to	31% (17°)

DIAGRAMS



DATA AND DIMENSIONS ARE INDICATIVE AND NOT BINDING

ADD-ON OPTIONS:

- White Rubber Non-Marking Tracks
- Custom Colors
- Emergency 12V Hydraulic System
- 110V Hydraulic System