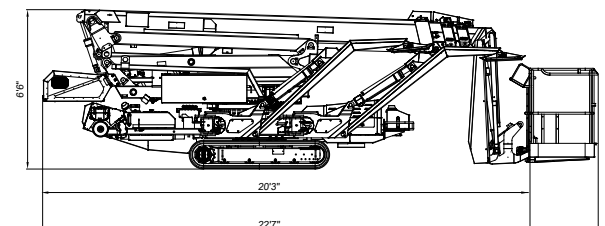
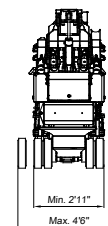
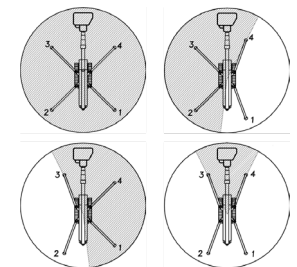
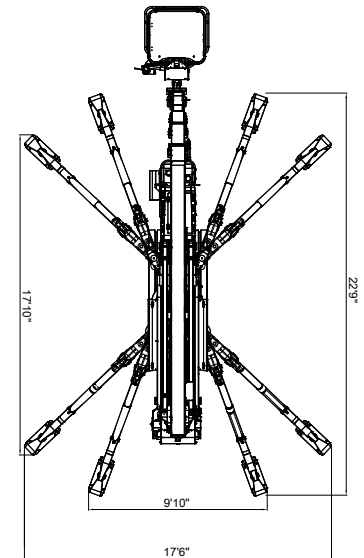
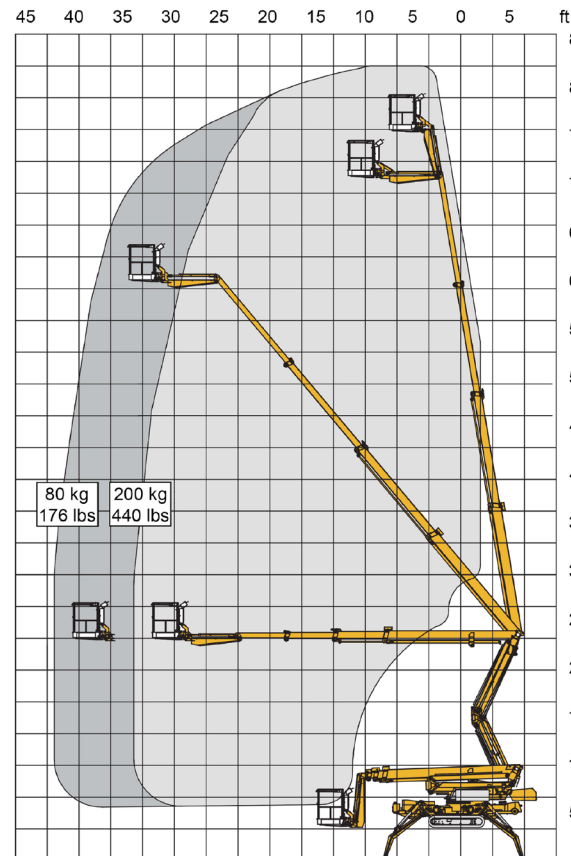


SPECIFICATIONS

Max. working height	82'
Max. outreach	42' (at 176 lbs)
Max. basket load	440 lbs
Basket size	2'8" x 2'6" x 3'7" (1-man basket interior)
Basket rotation	+ / - 41°
Turret rotation	+ / - 355°
Traveling length	22'7" / (20'3" without basket)
Traveling height	6'6"
Traveling width	2'11" (narrow mode) / 4'6" (wide mode)
Outrigger Spread	17'10" x 17'6" in wide position / 9'10" x 22'9" in narrow position
Battery	24V Emergency Descent System
Diesel engine	14kW / 18.8HP
Total weight	8,962 lbs
Gradability, max. across slope	30% (16.7°)
Gradability, max. up and down slope	30% (16.7°)
Deployment ability on slopes up to	40% (21.8°)

DIAGRAMS

DATA AND DIMENSIONS ARE INDICATIVE AND NOT BINDING



ADD-ON OPTIONS:

- White Rubber Non-Marking Tracks
- Custom Colors
- Spotlight in Basket
- Flashing Beacon Lights on Boom Stabilizers (5)
- Radio Remote Control Drive
- Auto Leveling
- Intercom
- Increased Battery Capacity, 400Ah
- 24V Hybrid